

The Pony Express

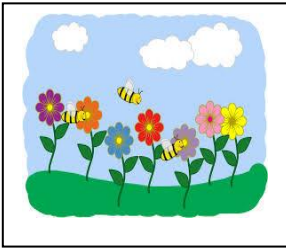
West University Elementary School
Houston Independent School District
Spring Edition, Volume XII, April 14, 2020

Scott C. Disch
Amber Pinchback
Daphne Rawlinson
John W. LaGrone Jr.
Stephanie Lugo

Principal
Assistant Principal
Assistant Principal
Dean of Instruction
Teacher Specialist

In This Issue

- Principal's Corner 1
- Birthday Bok Club 1
- HISD Grading Guidelines 2
- Ancillary Spotlight 3



Visit us on the web
at:

www.westues.org

Explore the PTO
website at:

<https://www.westup.to.org/>

Principal's Corner (Grades)

Last Thursday, HISD shared communication about grading guidelines (details on page 2) during distance learning. Over the last few weeks, I have had lengthy discussions with our teachers and administrators about grading, and after seeing the final guidelines from HISD, we have determined that assignments will not be graded during the distance learning period at West U Elementary. Teachers will continue to focus on providing learning options for students and giving feedback on focused assignments. Every learning environment is different at this moment, which means grades cannot be measured fairly, and we do not want to add another burden on parents, students, and teachers.

Our goal has been and will continue to be supporting families and students by providing different learning options during this time. If you are feeling overwhelmed about the options, please know that you have the freedom to choose assignments that best fit your daily schedule. We hope that our focus on learning and feedback instead of grades will alleviate any undue stress on children and parents.

Be well,

Scott C. Disch, Principal

Welcome to the Birthday Book Club



"So, open your mouth, lad! For every voice counts!" – Dr. Seuss

We wish our **April 13th – April 19th** birthday students a very Happy Birthday!

April 13th - April 19th Birthdays			
Hasan Purnak	April 13	Hannah Berlin	April 15
Gibson Allison	April 13	Alex Frew	April 15
Alice Kate Allison	April 13	Julia Belle Brooks	April 16
Mai Wijaya	April 13	Cameron Ellis	April 16
Alice Ginzal	April 13	Emma Bulk	April 17
George Linqin	April 14	Ethan Ellis	April 17
Ryan Najafi	April 15	Sahil Manjeshwar	April 18

For more information, please contact:

Lori Naughton lori.a.naughton@gmail.com, or Darcy Reid darcyreiddvm@yahoo.com



HISD Grading Guidelines

The district's grading guidelines are below. Since WUES is not taking grades for the 4th cycle, the average of the first three cycles will be the student's overall yearly grade for 1st – 5th grade. For kindergarten, teachers were asked to utilize the 3rd cycle to capture student's progress for the year, so the most recent report card will reflect student's growth and achievement for the year. The guidelines as well as other announcements from HISD can be found [here](#). If you have questions about the new grading policy, please reach out to the grade level administrator below.

- Kindergarten – Scott Disch
- 1st Grade – Daphne Rawlinson
- 2nd Grade – John LaGrone Jr.
- 3rd Grade – Amber Pinchback
- 4th Grade – Daphne Rawlinson
- 5th Grade – Stephanie Lugo

Houston ISD Updated Guidelines – April 2020

As a result of our students and faculty transitioning to a remote learning environment, HISD has modified its grading policies to ensure that student grades are not negatively impacted as a result of COVID-19. Through the policy changes described in this letter, the district reaffirms its commitment to equity for all students as we continue to support student learning:

Grading Policy for Elementary & Middle School Students

9-Week Report Card Cycle

Elementary and middle schools with 9-week grading cycles have the first three grading cycles completed.

- During the last grading cycle, there will be no distinction between daily and major grades.
- At the end of the school year, the 4th 9 weeks' average will only be counted if it will improve the student's overall yearly grade for the course.
- High school courses offered in middle school will follow the high school grading policy.

Example 1

1 st 9 weeks	2 nd 9 weeks	3 rd 9 weeks	Average of the 1 st -3 rd 9 weeks	4 th 9 weeks	Final Course Grade
75	82	73	$\frac{75+82+73}{3} = 77$	70 (4 th 9-weeks not used in the final grade calculation)	77

Example 2

1 st 9 weeks	2 nd 9 weeks	3 rd 9 weeks	Average of the 1 st -3 rd 9 weeks	4 th 9 weeks	Final Course Grade
75	82	73	$\frac{75+82+73}{3} = 77$	85 (4 th 9-weeks used in the final grade calculation)	$\frac{75+82+73+85}{4} = 79$

Ancillary

Ancillary teachers have been creating fun and engaging enrichment activities for students. Checkout the different options in the Ancillary Google Classroom to see which activities fit your schedule. This week, I am highlighting an activity selected by our P.E. teachers that helps support B.I.G. Love Cancer Care. Thanks Coach D and Coach Brown for helping coordinate! See Coach D's message below for additional details.

Students and parents,

[B.I.G. Love Cancer Care](#) is hosting a Virtual Run on April 19! I am inviting you to register and participate in this event. This organization is asking all runners, walkers, bikers, skateboarders, etc. across Texas and beyond to participate in a virtual run event to "escape quarantine" with their family to show united support for hematology and oncology kids and their families during this unprecedented time.

B.I.G. Love Cancer Care Services is a 501c(3) nonprofit, volunteer-based organization. The organization's mission is to help provide basic necessities and much-needed support to children battling cancer and their families. B.I.G. Love serves hematology/oncology patients in Central and South Texas under the age of 21, free of charge, regardless of income.

Click on this [link to register](#) for a student discount. Please encourage your family to join you!! I will be jogging with you on April 19 in the Houston Heights!

Thank you in advance for supporting such a worthy cause.

Coach Durham

